

Submersible Drill Specs

Max depth: 20 m (65.6 ft)
Length 25cm (9.9 inch)
16 Torque Settings + Drill
13mm (0.5") Keyless Chuck
2 Reversible Speeds
No - Load Speed 1: 0-1500
No - Load Speed 2: 0-400

18V
2.9kg (6.39lbs)

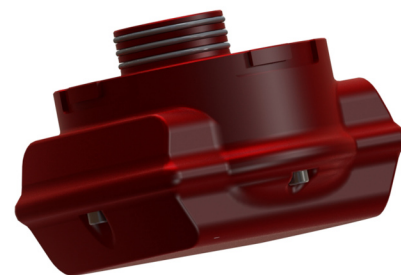


Battery

The Nemo Power Tools Submersible Drill has been tested at depths of up to 20 meters (65 ft) and operates at the same capacity as its dry-land counterparts.

Typically, underwater or wet-condition drilling has been limited to either pneumatic or hydraulically powered drills. However, this requires either a link to a compressor and tank on the surface or an external tank below. This electric cordless drill utilizes a simpler drive train than pneumatic or hydraulic drills, making it a fraction of the price and very comfortable to use.

Battery (aluminum case)
3Ah 18V Li-ion 770gr
(1.69 pounds)



Advantages

Simpler and
Lower Cost

NO external tanks

NO links to surface

NO hydraulic pump

NO hydraulic hoses

NO pneumatic air
compressor

